

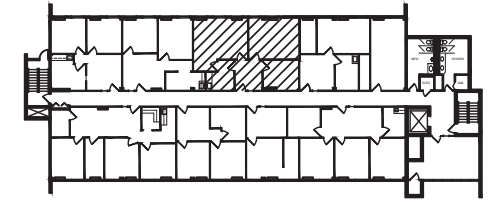
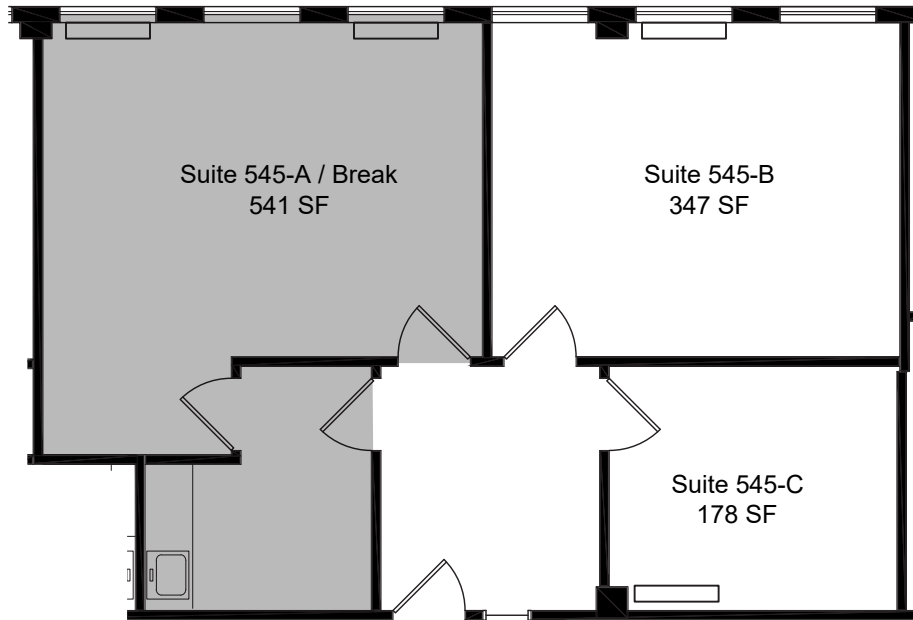
BOULEVARD 25 - 1805 South Bellaire Street

Scale: 1/8" = 1'-0"

Level 5



July 1, 2024



KEY PLAN

SUITE 545 1,066 RSF
SCALE: 1/8" = 1'-0"



boulevard **25**



MATRIX
GROUP, INC.

Lauren Quiram, Director of Leasing
lquiram@matrixgroupinc.com
(303) 300-5271